

1、 Single Energy Security Baggage Scanner X-Ray Scanner Machine

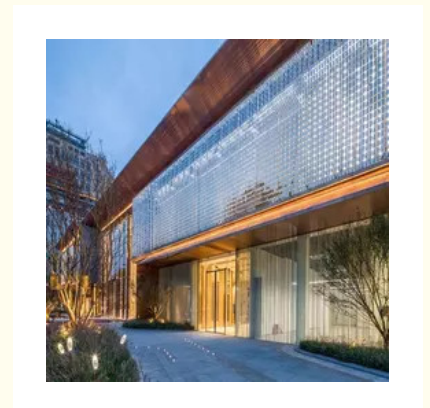
Basic Information

- Place of Origin: 00
- Brand Name: 2
- Certification: 3
- Minimum Order Quantity: 100
- Price: 1
- Packaging Details: 付款方式
- Delivery Time: 供 能力
- Payment Terms: 期限
- Supply Ability: 常 包装



Product Specification

- Name: Security Baggage Scanner
- Model No: LD-5030A
- Color: Blue
- Tunner Size: 500 (wide) X 300 (H) Mm
- Industry: Electronics Industry
- Max.Voltage: 6、 130kV
- Metal: Type Iron
- Thickness: 203*193*15cm
- Box Type: Self Erecting Boxes
- Radiation Power: 840~1300MW
- Metal Type: Iron
- Universal Type: Fit For 80% Model Cars' Injectors
- Indian Hair: Yes
- Size: 390x240x185cm
- Size: 390x240x185cm



Product Description

Item	Definition	Specs
System Parameters	Size	1350(L)x1250(W)x1700(H)mm
	Weight	1900kg
	Power	220AC/50Hz
	Power Consumption	1.6kW
X-ray Tube	Type	Closed
	Max.Voltage	130kV
	Max.Power	40W
	Spot Size	7μm
X-ray System	Intensifier	FPD
	Monitor	22 "LCD
	System Magnification	1600 X
Detection Region	Max.Loading Size	Φ570mm
	Max.Inspection Area	450mm x 450mm
X-ray Leakage		<1μSv/h

Product Description

Middle Size Dual View X-ray Baggage and Luggage Inspection Scanner for Public Security Scanning.

We have three different designs for your option, all patents and copyrights reserved.

Now dual view x-ray security scanner is a hot trend for high end customers security needs, it is deployed with two generator, one is from top, the other from the side, which can give two perspective and high quality scanned images from different angles, to discover and reveal the potential threats in the baggages and luggages.

Specification

Advantages

- 1,Comprehensive leadership: Product performance of International first-class level, high-definition images, strong penetration, high resolution, and powerful material identification.
- 2,Unique system: with embedded windows operating system, multi-core ARM, the system features a simple architecture, low power consumption, energy saving and environmentally friendly, meanwhile it has a real-time status monitoring function to keep abreast of the device work process.
- 3,Safety and environmentally friendly: The equipment meets safety and environmental standards.
- 4,Stable and reliable: The production process is strictly controlled in accordance with the ISO9001 quality management system. Through rigorous high-low temperature experiments, wet heat experiments and vibration experiments, it is certified that the product runs continuously for more than 10,000 hours without failure.
- 5,Strong frame shell: Made by 304 stainless steel, 2-3mm cold-rolled steel plate and Fangtong steel, integrated with industrial advanced technology, the frame shell outside is designed with strong and reliable structure, to ensure rust-proof, corrosion-proof and free of cable damage

Equipment functions

- 1,Imaging process functions: Color/BW, Local Enhancement, Enhancement of High Penetrating Power, Enhancement of low Penetrating Power, Super Enhancement, Organics Exclusion, Inorganic Exclusion, Negative, Brightening, Darkening, Gray-Level scan, Zoom in and out, Pseudo-color Processing, Organics Enhancement, Alarm sign box of suspicious object, Edge Enhancement.
- 2,System functions: Power-on self-test, multi-level user management, image management, TIP management, curve diagnosis, keyboard diagnosis, device information query, multi-format image export, OSD operation function, image mirroring, 1-64 times continuous magnification, magnifying glass, Operator training, accurate positioning of package images, empty channel reminders, remote operation software, one-button shutdown, and intelligent roller engine (optional).



Ellawig companys



+86-15399918960



service@ellawigss.com



ladyshairextensions.com

Room 501, unit 6, building 20, North Lane, east flower market, Beijing